

MATERIAL :

THE FRAME SHALL BE MADE OF 6063-T5
EXTRUDED ALUMINUM TUBULAR DESIGN
12.7 mm x 38.1 mm (1/2" x 1 1/2")
TO SPECIFICATION CE/AN .0004 (CLEAR)
OR DURACRON BAKED ENAMEL.

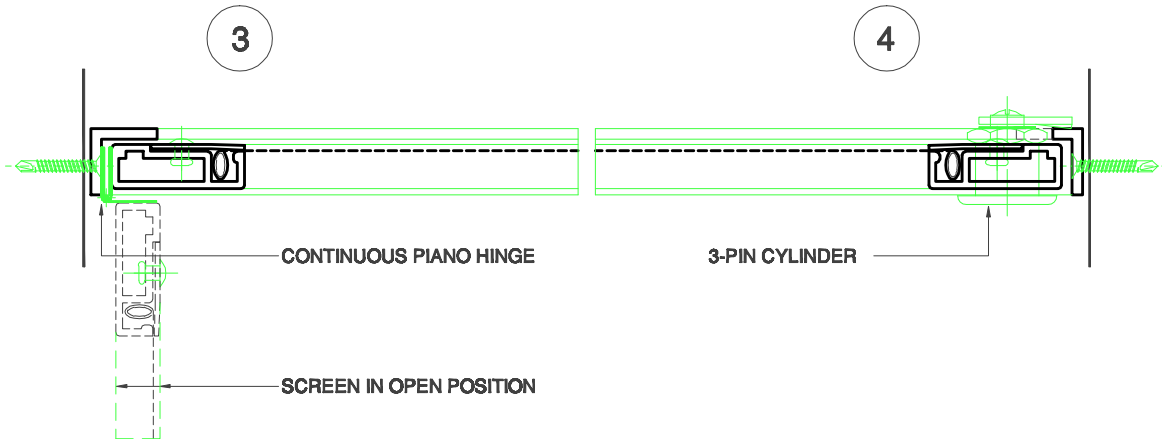
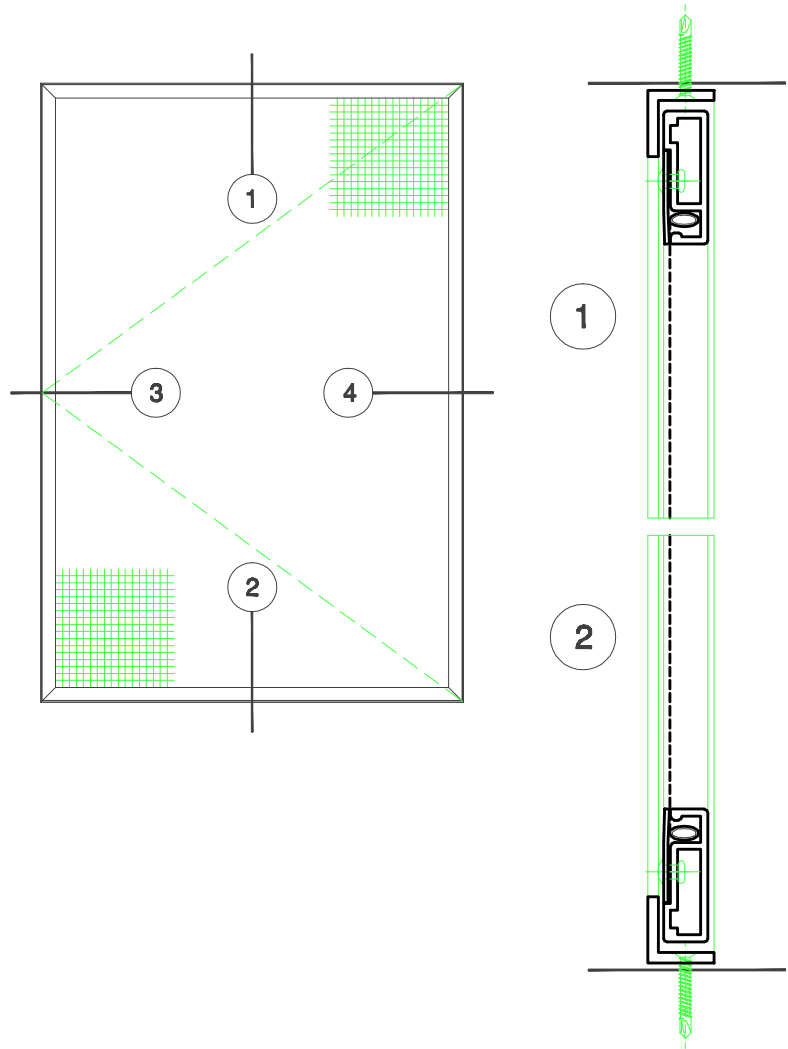
THE SPLINE RETAINING STRIP
SHALL BE MADE OF ALUMINUM.

THE WIRE CLOTH SHALL BE 0.457 mm (.018")
DIAMETER DOUBLE CRIMPED STAINLESS STEEL
16 x 16 MESH PER 645 mm²(SQ. INCH).

FABRICATION :

ROLL EDGES OF CLOTH IN FRAME GROOVE
AND WEDGE IT IN PLACE WITH SPLINE.
PERMANENTLY SECURE TO FRAME WITH
RIVETTED RETAINING PLATE.

FIX FRAMES WITH STAINLESS STEEL,
TAMPER RESISTENT SCREWS.



SHERWOOD WINDOWS LIMITED TYPE A MINIMUM SECURITY SCREEN