

**MATERIAL :**

THE SUBFRAME, MAINFRAME AND COVER SHALL BE MADE OF 8063-T5 EXTRUDED ALUMINUM TO SPECIFICATION CE/AN .0004 (CLEAR) OR DURACRON BAKED ENAMEL.

**THE SUBFRAME THICKNESS**

SHALL BE 3.175 mm (.125"),

THE MAINFRAME 5.562 mm (.219") AT THE FLANGES AND THE WEB OF 3.81 mm (.150").

COVER PLATE TO BE 1.575 mm (.062").

**THE WIRE CLOTH SHALL BE 1.1938 mm (.047")**

DIAMETER DOUBLE CRIMPED STAINLESS STEEL AS SPECIFIED, HAVING A LOAD BREAKING POINT AT 1470 LBS.

**FABRICATION :**

THE CORNERS OF THE SUBFRAME AND MAINFRAME SHALL BE REINFORCED AND WELDED WITHOUT MARRING THE FINISHED, EXPOSED SURFACES.

THE EDGE OF THE WIRE CLOTH SHALL BE FOLDED OVER A SHOCK DISTRIBUTING BARS EMBEDDED IN SHOCK ABSORBING YOKES SPACED NOT MORE THAN 152 MM (6") APART. BETWEEN EACH SHOCK ABSORBER THE CLOTH SHALL BE FASTENED WITH POP RIVETS.

**HARDWARE :**

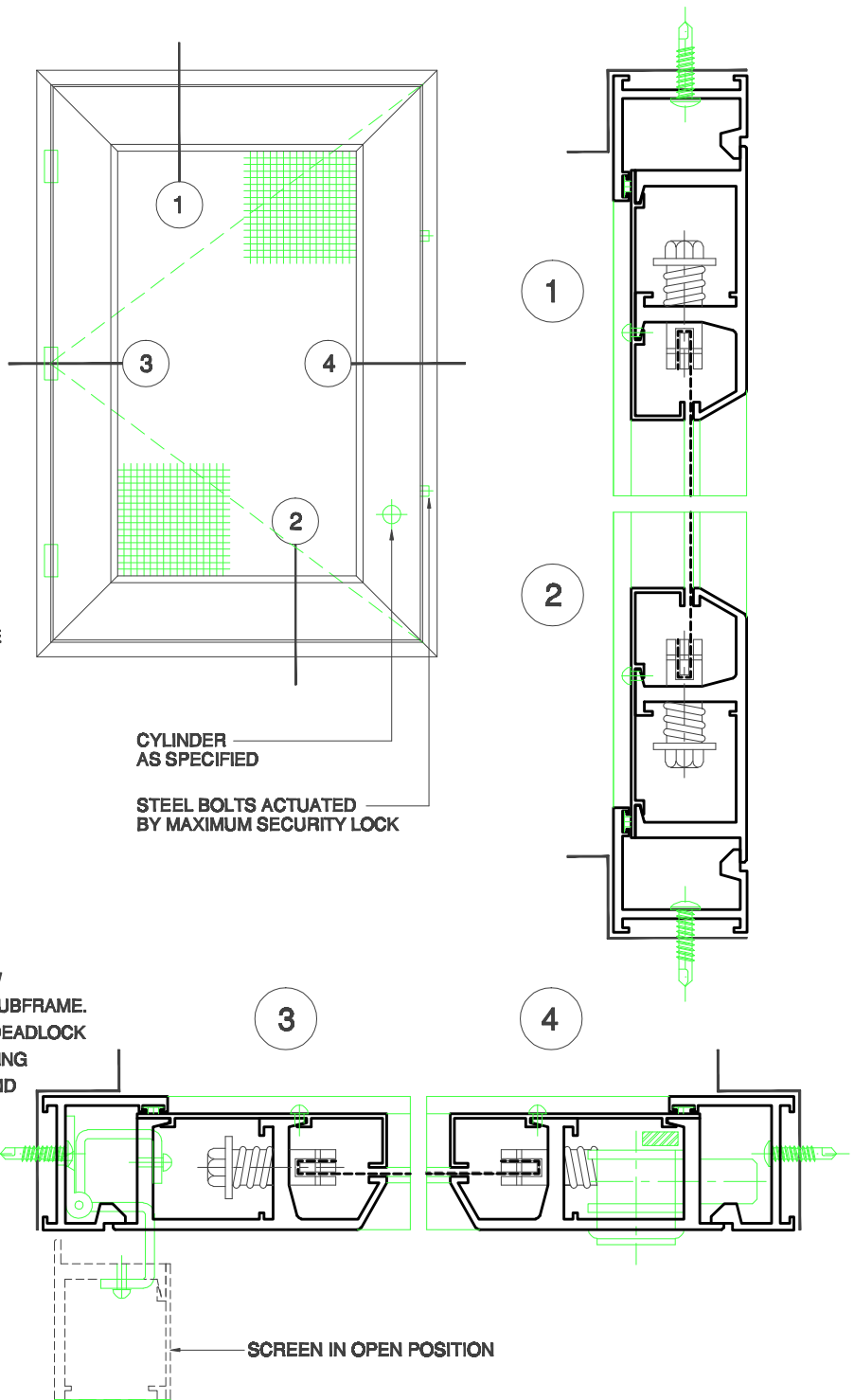
CONCEALED EXTRA HEAVY EXTRUDED ALUMINUM HINGES WITH STAINLESS STEEL PINS SHALL ALLOW THE SCREEN TO BE OPENED 90 DEG. WITHIN THE SUBFRAME. LOCK SHALL BE ADAMS-RITE MAXIMUM SECURITY DEADLOCK TYPE MS-1850-A WITH ACTUATED TWO POINT LOCKING (FOR SCREENS GREATER THAN 1220 mm HEIGHT AND SINGLE POINT LOCK FOR SCREENS LESS THAN 1220 MM).

PROVIDE "KEYED-ALIKE" TO THE SYSTEM FROM 5 PIN CYLINDER UP TO 12 PIN MAXIMUM SECURITY CYLINDER.

COMPLETE WITH SPECIAL TAPERED EXTENSION SLIP RINGS.

SCREWS AND MASONRY ANCHORS SHALL BE SUPPLIED AS REQUIRED.

MASONRY ANCHORS SHALL BE EXPANSION SHIELD TYPE. WOOD PLUGS ARE NOT PERMITTED.



# SHERWOOD WINDOWS LIMITED TYPE AAA MAXIMUM SECURITY SCREEN