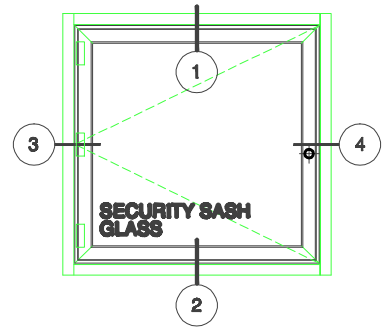
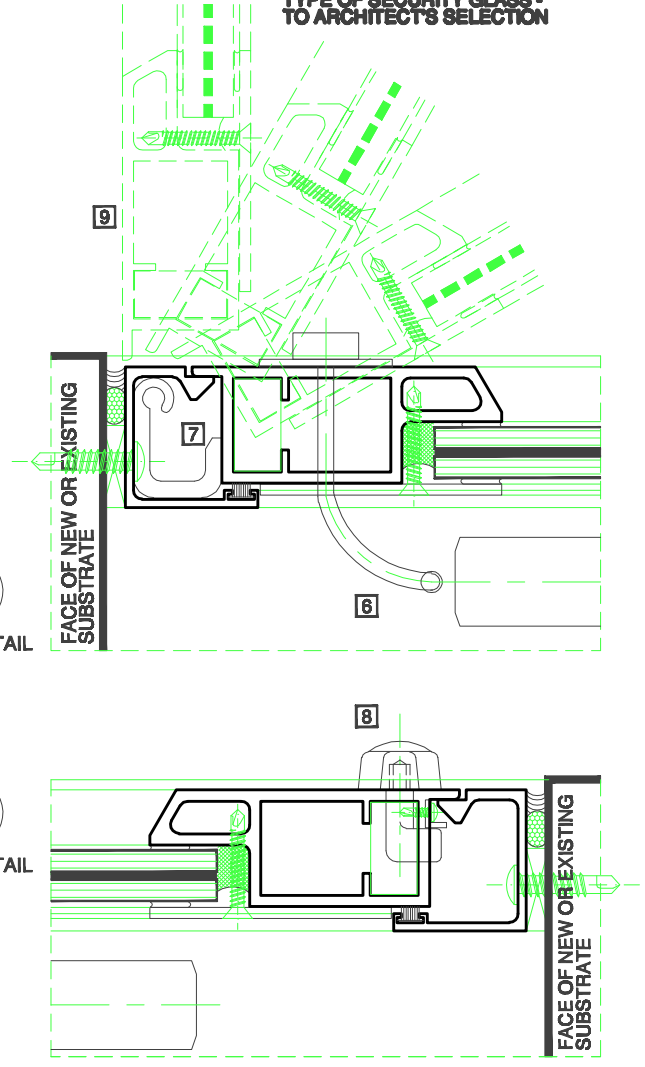
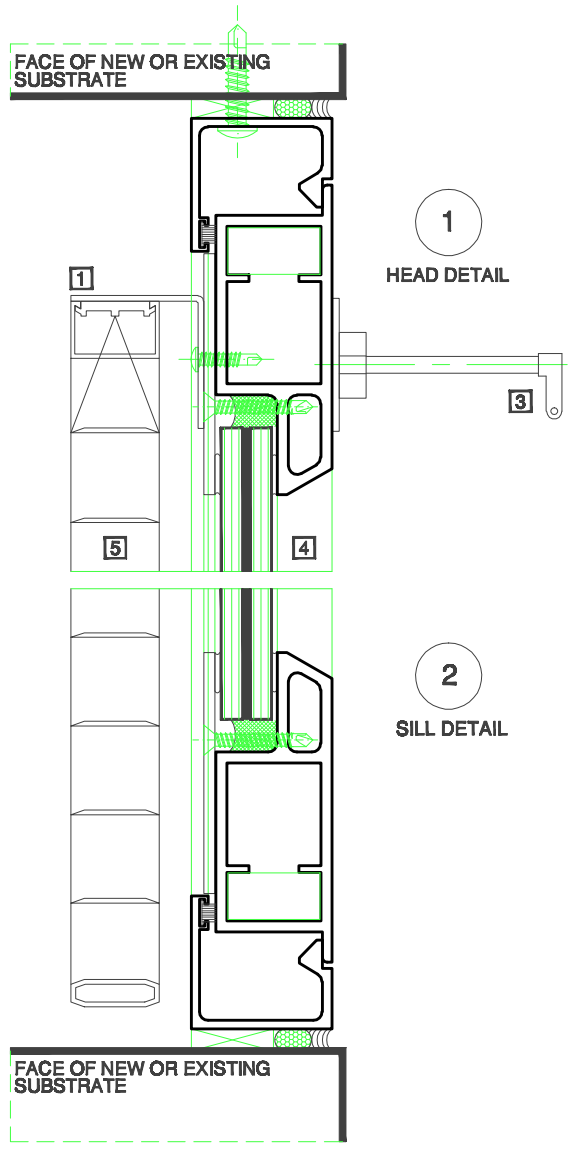


- 1** 14GA PREFINISHED FORMED ALUMINUM CONTINUOUS MOUNTING ANGLE
- 2** CONTINUOUS PERIMETER STRUCTURAL SILICONE
- 3** REMOVABLE KEY OPERATOR
- 4** SECURITY SASH GLASS
- 5** ALUMINUM VENETIAN BLINDS
- 6** FLEXIBLE CONTROL CABLE
- 7** CONCEALED EXTRA HEAVY DUTY EXTRUDED ALUMINUM HINGES WITH STAINLESS STEEL PINS; 3 HINGES PER SULL SASH
- 8** SOLID WHITE BRONZE 2-POINT ALLEN KEY LOCKS COMPLETE WITH REMOVABLE KEY
- 9** SASH IN FULLY OPEN POSITION



TYPICAL ELEVATION
 TYPE OF SECURITY GLASS - TO ARCHITECT'S SELECTION



SHERWOOD WINDOWS LIMITED
SS-5100 MEDIUM SECURITY SASH ENCLOSURE
TYPICAL INTERIOR APPLICATION